



ASIAN GATEWAY SERVICES



Catalysts of Renaissance

Overview

Global volatility, driven by geopolitical tensions, supply-chain disruption and uneven recovery has prompted organizations to rethink where work gets done. Many companies are adopting distributed teams to reduce geographic risk, ensure continuity, and access specialized skills that are scarce or costly at home.

Global organizations are leveraging Global Capability Centers (GCCs) and distributed teams to access niche skills, accelerate innovation and achieve meaningful cost advantages. Establishing operations in high-growth regions such as India and other Asian economies has therefore become a strategic priority for companies seeking resilience, scalability, and competitive advantage.

P.R. *GLO*inks supports global companies in navigating these expansion strategies by providing structured advisory, execution support, and program management across the entire global expansion lifecycle.

P.R. *GLO*inks enables organizations to transform global expansion from a risky undertaking into a structured, scalable growth strategy.

Macro Outlook

Asia's economy expanded by about 4.6% in 2024, sustained strong momentum through 2025, and is projected to remain robust into 2026, reinforcing its role as the world's primary growth engine.



India, with growth exceeding 7% in 2025, and China, at nearly 5%, remain pivotal markets for organizations seeking scale and strategic advantage.

Country/Region	GDP Growth Rate (2024)	GDP Growth Rate (2025)	Projected GDP Growth (2026)
Europe	1.4%	~1.6- 1.8%	~1.6%
USA	2.5%	~2.0%	~2.4%
Brazil	2.9%	~2.9%	~2.8%
Russia	3.6%	~2.6-3.0%	~0.6%
China	5.2%	~4.8-5.0%	~4.8%
India	6.5-6.8%	~6.6-7.6%	6.1-6.5%

Meanwhile, Southeast Asian economies including Vietnam, Indonesia, the Philippines, and Bangladesh are consistently recording growth rates near 6%. Positioning them as important destinations for organisations seeking to diversify operations and capture emerging opportunities across the Asia-Pacific corridor.

Our Services

Every organization expanding internationally has different priorities- speed to market, talent access, cost optimization, operational control, or risk diversification. Entering new markets requires careful planning, regulatory understanding, talent-access strategies, and operational support.

At P.R. *GLO*links, we apply our Right-Sourcing expertise to determine the most suitable expansion model for each client. Depending on the strategic objectives, this may involve establishing a Global Capability Center (GCC), entering the market through local partnerships or acquisitions, building distributed teams through Employer on Record (EOR) models, accessing specialized global talent pools, or implementing technology-enabled operating models.

Rather than offering a single solution, we design and coordinate the optimal combination of services tailored to each client's expansion strategy.

P.R. *GLO*links '**ASIAN Gateway Services**' package is a comprehensive solution encompasses initiation; planning; budgeting; strategize; identify; develop communication, financial, governance, control frameworks; and program manage expansion.

P.R. *GLO*links facilitates the needs of the companies who:

- Seek information to enter and access these markets;

- Faces challenges in marketing intangibles, and need to raise awareness and demonstrate credibility;
- Recognize the value of strategic planning for its cost-effectiveness and error avoidance;
- Values cultural sensitivity because local differences can affect the bottom line;
- Chooses to outsource preparatory work due to limited internal staff and/or expertise, thereby making the process time-efficient;
- Requires confidentiality.

P.R. *GLO*links is a **Vendor Independent 'Right-Sourcing' Business & Technology consulting firm that helps clients assess and manage risks** associated with global expansion. We act as a marketing consultant, program manager and implementation partner-coordinating regulatory, real-estate and operational solutions from market entry through stabilization.

Our research on cultural differences across India, Europe, and USA, together with our sourcing locations insights, enables clients to overcome hurdles and adopt the processes and technologies needed to govern distributed teams across time zones and cultures.

Asian Gateway Services

A. Expansion Strategic Advisory

Whether you are establishing a Global Capability Centre (GCC) or launching products and services in India and other Asian markets, P.R. GLO links provides strategic advisory to help organizations evaluate market opportunities, assess operational feasibility, and identify the most suitable locations for expansion.



Our structured approach evaluates **talent availability, cost structures, infrastructure readiness, and regulatory considerations** enabling clients to make informed expansion decisions.

B. Location strategy & Site Selection



Leveraging P.R. GLO links' industry acumen and in-depth knowledge of the Asian marketplace

- **Location Shortlists:** Cities across Asia including Tier 2 cities are evaluated based on strategic fit, total cost of operations, talent availability, infrastructure, and regulatory environment.
- **Incentives and economics:** Assess state and local incentives and model total cost of occupancy.
- **Labor and attrition modeling:** Forecast future labor trends and attrition risk to avoid overheated locations.
- **Data protection and regulatory continuity:** Evaluate local data-privacy rules and regulatory trends.

We offer our clients invaluable business resources and decision making data, including:

- *A robust network of local contacts on the ground.*
- *Consultants with expertise in strategy and location.*
- *An evolving database of facts, deal listing, and industry data.*

We provide powerful data, industry knowledge, and expertise for every aspect of your site selection:

- **Comparative Location Assessment:** *Structured evaluation of shortlisted locations across cost, talent, regulatory environment, infrastructure readiness, and long-term scalability.*
- **Location visits:** *Fully scheduled, concise site visits to support decision making.*
- **Transition planning:** *Step by step plans to achieve your operational goals.*

C. Entity setup & Operational Enablement

Clients can leverage on P.R. *GLINKS'* offices in India and our partners' offices across Asia to

- Register the company and complete statutory setup.
- Manage offshore providers including real estate agents, recruitment firms, and logistics partners
- Optionally coordinate dedicated professionals or partner resources to support liaison, administrative, accounting, and payroll activities.
- Coordinate logistics.
- Ensure entity level local regulatory compliance.
- Provide dedicated sales and marketing experts to develop a country specific go to market strategy.

D. Implementation & Program Management



P.R. *GLINKS'* multidisciplinary consultants partner with your team to implement go-to-market and sales strategies, deploy operational systems and governance, and execute risk-management and business-continuity plans. We oversee project delivery, manage local execution through dedicated on-the-ground resources, and define exit and handover options.

We coordinate closely with our [Talent](#) service for recruitment, on boarding, and workforce delivery to ensure seamless execution and knowledge transfer.

[Deliverables](#) include a roadmap, a KPI dashboard and regular status reporting, knowledge-transfer plans, and agreed SLAs to ensure measurable outcomes and a smooth transition to steady-state operations...

E. Market Entry Through Mergers & Acquisitions

Expanding through acquisition can be a right strategy for certain organizations to establish themselves faster. Many organizations choose a mix of organic establishment together with an acquisition strategy as the best way forward.

P.R. *GLO*inks process for acquisition includes understanding your business and its growth goals for the future, developing an ideal target specification, identifying and approaching prospects confidentially on your behalf.

P.R. *GLO*inks shall facilitate during the entire process of

- Identification of the target
- Coordinate Due Diligence
- Perform Risk assessment.
- Assist in Negotiations, contract drafting & transaction execution.
- Post-merger integration planning.

F. Global Talent Access & Remote Workforce solutions



To leverage India's vast skilled workforce and drive organizational growth, P.R. *GLO*inks assists clients in building distributed teams that integrate seamlessly with global operations.

Our services include:

- **Remote Hiring Support**– Sourcing, screening, and onboarding high-quality talent aligned with your organizational requirements.
- **Employer of Record (EOR) Services**– For organizations that wish to hire talent in a new country without establishing a legal entity, P.R. *GLO*inks can facilitate EOR solutions through trusted partners. This enables companies to quickly deploy teams while ensuring full compliance with local employment, tax, and regulatory frameworks.
- **Compliance & Payroll Management**– Ensuring local labor compliance, payroll processing, benefits administration, and statutory requirements are handled efficiently.
- **Talent Retention & Engagement Strategy**– Designing frameworks that support long-term workforce stability in distributed environments.
- **Integration of Global Teams**– Supporting governance, reporting structures, and cultural integration to ensure remote teams operate as an extension of your global organization.

This approach enables organizations to access niche skills, scale quickly, and test new markets before committing to a full operational presence.

G. GCC Technology and Operation Model Transformation



P.R. *GLO*links advises on the technology and operating-model changes required to maximize value:

- Define target operating model and technology stack (cloud, automation, AI/ML, analytics).
- Support vendor selection, proof-of-concepts, and pilot programs to accelerate capability build-out.
- Design data-driven governance, performance metrics, and continuous improvement processes.
- Advice on platform-based delivery models to scale services across distributed teams.

Outcome: Faster time-to-value, improved automation of repeatable processes, and a roadmap for AI-enabled services.

Conclusion:

Global expansion today requires more than simply opening an office in another country. It demands the right strategy, location decisions, talent access, and operational governance.

P.R. *GLO*links helps organizations **enter Asian markets, establish GCCs, and build distributed teams** with a structured approach that minimizes risk and accelerates results.

Why P.R. *GLO*links?

P.R. *GLO*links' accumulated knowledge, in-depth acumen of the business processes, comprehensive assessment of marketplace realities, and our program management skills, coupled with

- End-to-End Expansion Advisory– From strategy to operational stabilization.
- Right-Sourcing Expertise– Identifying the optimal expansion model for each client, whether through **GCC establishment, market entry advisory, Employer-of-Record solutions, talent sourcing, or technology-enabled operating models.**
- Deep Asia Market Knowledge – Understanding of regional regulations, talent ecosystems, and business environments.
- Integrated Program Management – Coordinating legal, HR, real estate, and operational partners.
- Vendor-Independent Advisory – Ensuring recommendations are aligned with the client's strategic goals.
- Flexible Engagement Models – Supporting clients across the entire lifecycle of global expansion.

About P.R. *glo*links

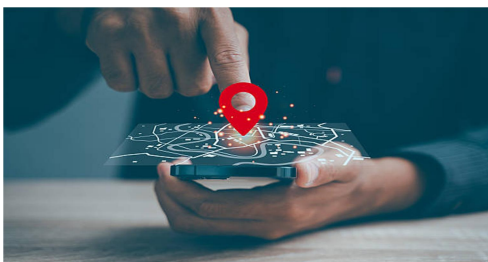


We work with organizations as a business partner, providing tactical guidelines on Right-Sourcing, relationship management, build value added processes and practices. Organizations can choose from the range of services across the lifecycle, and each offer significant value in its own right.

We are different. We consider ourselves as partners of growth. We prove to be an extended arm of client's organization maintaining high degrees of confidentiality, openness and integrity. If your values match with ours we could establish a lasting partnership.

Your trusted partner in enabling successful business expansion across Asia.

We build organizations,
We enable culture change,
We help to achieve performance excellence.



Head Office: 5045, H Block, 25th Street, Annanagar, Chennai 600040, India **Tel:** +91-44-26163720 /9841037909

UK Office: 102~112 Windmill Road, Croydon – CRO 2XQ, United Kingdom

www.prglolinks.com

info@prglolinks.com

Ser120.5_010426

Catalyst of Renaissance